



QUICKSHIP

SHIPS IN 5 DAYS!*

* business days

- Light gray laminate work surfaces
- Powder coat color selection options:



- For quantities of 5 or less
(For quantities greater than 5, consult BOSTONtec.)



Workstations

PART NO.	HEIGHT ADJUSTABLE WORKSTATIONS
PB3048	30"d x 48"w, Medium Duty - Electric
PB3060	30"d x 60"w, Medium Duty - Electric
PB3072	30"d x 72"w, Medium Duty - Electric
PB3648	36"d x 48"w, Medium Duty - Electric
PB3660	36"d x 60"w, Medium Duty - Electric
PB3672	36"d x 72"w, Medium Duty - Electric
PBH3048	30"d x 48"w, Heavy Duty - Electric
PBH3060	30"d x 60"w, Heavy Duty - Electric
PBH3072	30"d x 72"w, Heavy Duty - Electric
PBH3648	36"d x 48"w, Heavy Duty - Electric
PBH3660	36"d x 60"w, Heavy Duty - Electric
PBH3672	36"d x 72"w, Heavy Duty - Electric
AFH3048	30"d x 48"w, Heavy Duty - Electric
AFH3060	30"d x 60"w, Heavy Duty - Electric
AFH3072	30"d x 72"w, Heavy Duty - Electric
AFH3648	36"d x 48"w, Heavy Duty - Electric
AFH3660	36"d x 60"w, Heavy Duty - Electric
AFH3672	36"d x 72"w, Heavy Duty - Electric

Work Surfaces

PART NO.	PREMIUM GRADE PLASTIC LAMINATE
3M3048	30"d x 48"w
3M3060	30"d x 60"w
3M3072	30"d x 72"w
3M3648	36"d x 48"w
3M3660	36"d x 60"w
3M3672	36"d x 72"w

Feet or Casters

WORKSTATION MODEL	DEPTH	LEVELER FEET	CASTERS (2 LOCKING & 2 NON-LOCKING)
PB	30	FA30G	FD30G
	36	FA36G	FD36G
PBH	30	FA30I	FD30I
	36	FA36I	FD36I
AFH	30	FA30C	FD30C
	36	FA36C	FD36C

Accessories



PART NO.	DESCRIPTION
SBUP53	Single Bay Slotted Uprights

PART NO.	DESCRIPTION
DBUP53	Double Bay Slotted Uprights

PART NO.	DESCRIPTION
TBUP53	Triple Bay Slotted Uprights



DIV1215



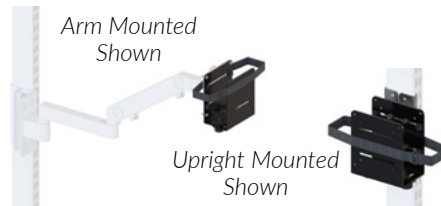
CSSDIV



PART NO.	DESCRIPTION
SH0830	Steel Shelf, 8"d x 30"w
SH1230	Steel Shelf, 12"d x 30"w
SH1530	Steel Shelf, 15"d x 30"w
DIV1215	Steel Shelf Divider, SH1230 & SH1530 Compatible

PART NO.	DESCRIPTION
CSS1530	Corrugate Storage Shelf, 15"d x 30"w
CSS1560	Corrugate Storage Shelf, 15"d x 60"w
CSSDIV	Corrugate Storage Shelf Divider

PART NO.	DESCRIPTION
PFSMA	Pneumatic Height Adjustable Flat Screen Monitor Arm



Arm Mounted Shown

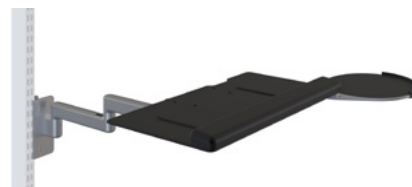
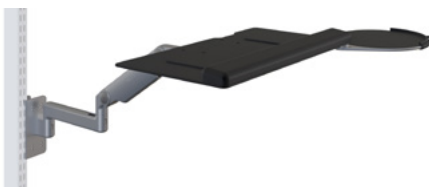
Upright Mounted Shown



PART NO.	DESCRIPTION
FPDA	Articulating Flat Screen Monitor Arm

PART NO.	DESCRIPTION
CPUTC	CPU Holder Thin Client

PART NO.	DESCRIPTION
CPU02	CPU Holder



PART NO.	DESCRIPTION
PKBAA	Pneumatic Height Adjustable Keyboard Tray

PART NO.	DESCRIPTION
KBAA	Articulating Keyboard Tray with Mouse Pad

PART NO.	DESCRIPTION
UWKTM	Tray and Mouse Pad
UWKT	Tray Only

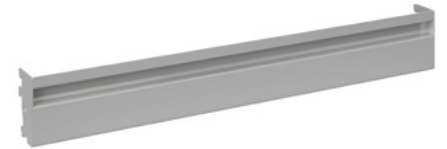
Accessories



PART NO.	DESCRIPTION
LED243248	LED Overhead Light (4) 24" Bulbs, 48" Tool Track
LED225660	LED Overhead Light (2) 48" Bulbs, 60" Tool Track
LED225672	LED Overhead Light (2) 48" Bulbs, 72" Tool Track



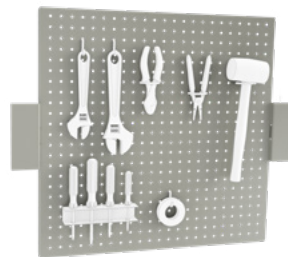
PART NO.	DESCRIPTION
PBHM08	Horizontal 8-Outlet Power Bar



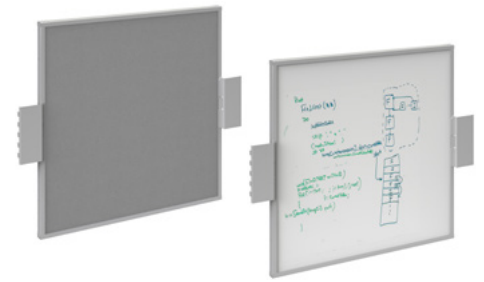
PART NO.	DESCRIPTION
BR0429	Bin Rail



PART NO.	DESCRIPTION
SHR830	Spool Holder Rod



PART NO.	DESCRIPTION
BS2428P	24" x 28" Peg Board



PART NO.	DESCRIPTION
BS2428	24" x 28" Backscreen
BS2428W	24" x 28" White Board



PART NO.	DESCRIPTION
FSFR	Free Standing Footrest



PART NO.	DESCRIPTION
DRW03	Single Steel Drawer, 3" x 18" x 12" w
DRW06	Single Steel Drawer, 6" h x 18" d x 12" w
DRW12	Single Steel Drawer, 12" h x 18" d x 12" w
DRWF12	Single Steel Drawer, 12" h x 18" d x 12" w, Lateral File



PART NO.	DESCRIPTION
DRW26	2-6" h Drawers Stacked, 12" h x 18" d x 12" w
DRW612	1-6" h & 1-12" h Drawers Stacked, 18" h x 18" d x 12" w
DRWF612	1-6" h & 1-12" h Lateral File Drawers Stacked, 18" h x 18" d x 12" w
DRW212	2-12" h Drawers Stacked, 24" h x 18" d x 12" w
DRW36	3-6" h Drawers Stacked, 18" h x 18" d x 12" w
DRW3612	1-3" h, 1-6" h, & 1-12" h Drawers Stacked, 21" h x 18" d x 12" w