

OSH3030/OSH3060 Hardware List

- 2 – Overhead Spool Holder Arms
- 2 – Upright Clamp W/O Pem Fitting
- 1 – Overhead Spool Holder Rod Assembly
- 4 – $\frac{5}{16}$ -18 x 1" Hex Head Cap Screws

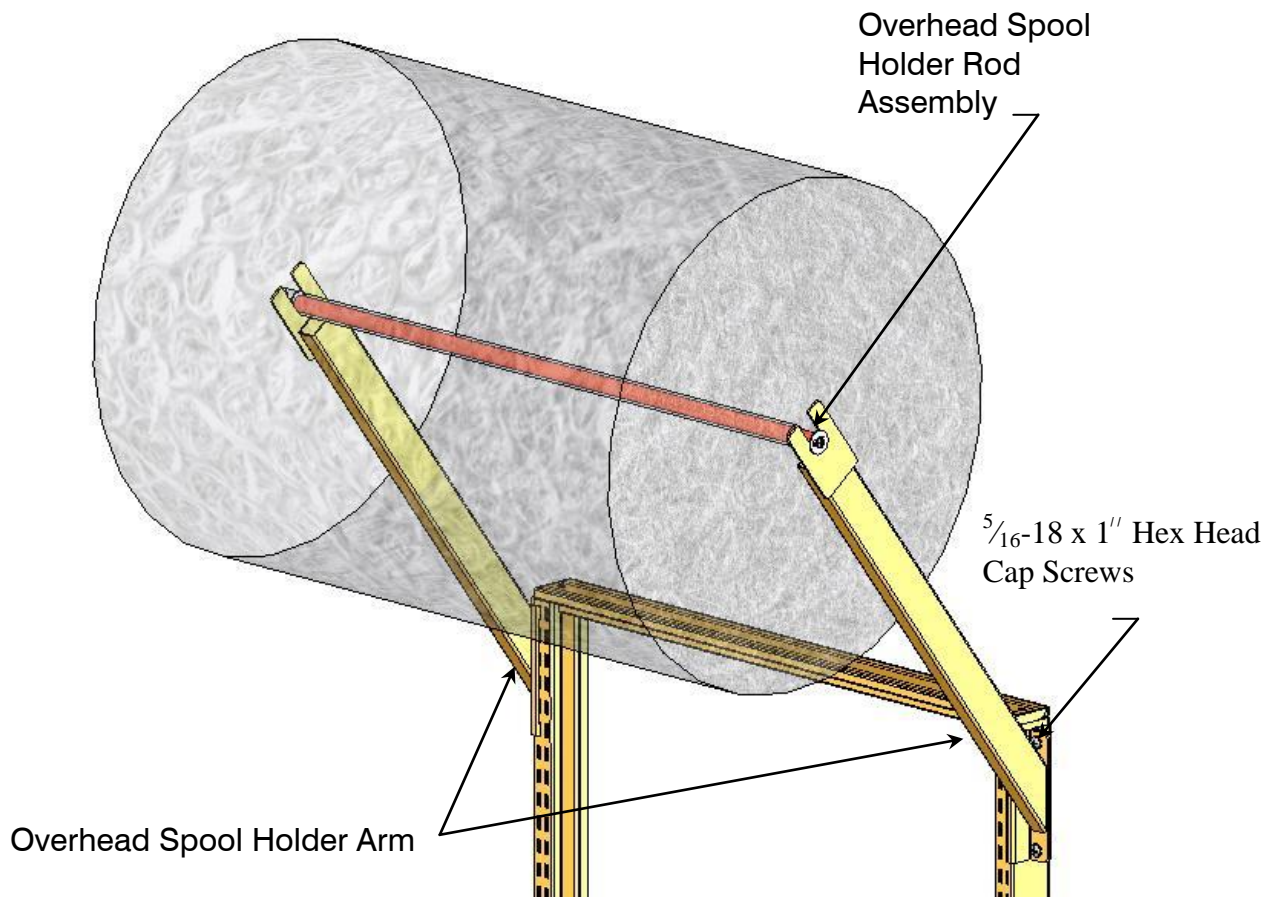


fig - 1

Chose the desired position of the spool holder and place the arms into the slots. Place the other upright clamp into the opposite side of the upright and connect the clamp using the two $\frac{5}{16}$ -18 x 1 Hex Head Cap Screws provided, repeat for other arm. Slide the Overhead Spool Holder Rod assembly into the slots on the arm. (See *fig - 1*)