

Work Surfaces

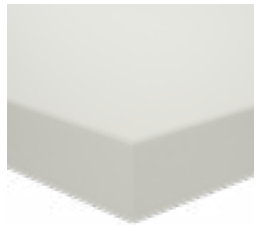
Select from a large variety of work surface materials to meet any application and budget.

Premium Grade Laminate

This highly durable work surface is constructed with a top layer of 1/4" thick laminate over 1 1/2" high density core board.

Standard Edge

All four sides are edged with a highly impact-resistant 3mm thick PVC edging in a complementary color. Finished with a 2mm radius.



T-Mold

All four sides are edged with a resilient molded dark charcoal color bumper. Rounded corners are formed with a 1 1/4" radius.



Cleanroom

A premium grade laminate work surface with sealed edges and a laminate underside for cleanroom environments. All four sides are edged with a high impact-resistant 3mm thick PVC edging in a complementary color. Finished with a 2mm radius. (Typically used in class 100, 1000, and 10000.)

Also available in a post formed version with 0.375" radius front edge profile, for better user comfort. Phenolic or laminate underside.

Electrostatic Discharge (ESD) Version

All surfaces above are also available in an Electrostatic Discharge (ESD) version utilizing a special laminate that reduces electric current transfer on the work surface. Flush ESD grounding bolt is included and swivet connectors are available for grounding.



Grounding Bolt (Swedge)
included



Swivet Connector
optional

BUILD YOUR PART NUMBER

WORK SURFACE PREFIX:

3 MM:	3M	3 MM ESD:	3ME
T-Mold:	TM	T-Mold ESD:	TME

WORK SURFACE PREFIX (CLEANROOM):

3 MM (Laminate):	3M	3 MM (Laminate) ESD:	3ME
Post Formed (Phenolic):	PF	Post Formed ESD:	PFE
Post Formed (Laminate):	CR	Post Formed ESD:	CRE

3M2460

Prefix Depth & Width

Standard color: Gray
Additional colors available

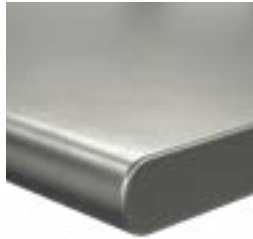
Work Surfaces Continued...

Additional Options

Different applications can require specific work surfaces. BOSTONtec offers the most popular options – as well as special requests.

Stainless Steel

Durable and chemical-resistant, 1¹/₂" stainless steel work surfaces are constructed of 304 grade, 14 gauge stainless steel formed over a sealed laminated core board. Work surface comes with a random brushed finish and is non-reflecting.



Maple

Ideal for areas that must stand repeated wear and tear. Beautifully fabricated with 1³/₄" edge laminated hardwood maple. This surface provides maximum strength and durability and looks good doing it. Also available in a 180° rolled edge.



Phenolic Resin

Solid phenolic is a high-pressure, thermoset resin composite. This chemical-resistant material is nonporous and non-conductive with high impact resistance and superior structure strength.



Didn't see what you need?
We've got you covered.

Contact your sales representative today
for additional work surface options.

BUILD YOUR PART NUMBER

WORK SURFACE PREFIX:

Stainless Steel: SS | **Maple:** MS | **Phenolic Resin:** PR

MS2460

Prefix Depth & Width